

# Beacon Volunteer Ambulance Corps

## Application to Upgrade to AEMT Service

October 19, 2023

Prepared by:

Antony Tseng, Program Manager  
Beacon Volunteer Ambulance  
ATseng@BeaconVAC.org



## Contents

1. Emergency Medical Services System Analysis for Advanced Life Support Upgrades that contains all pertinent agency information.....	4
1.1. Background of the Applying Service .....	4
1.2. How We Are Dispatched .....	5
1.3. Basic Life Support First Response Services (i.e., Police, Fire Departments, and EMS) .....	6
1.4. Name of Mutual Aid Basic Life Support Ambulance Services: (i.e., any ambulance service that responds to the primary service area when unavailable) .....	7
1.5. Name of Advanced Life Support Services: (i.e., EMT-I, EMT-CC, EMT-P) .....	8
1.6. BLS Adjuncts.....	8
1.7. Name of Hospitals Patients are primarily Transported to:.....	9
1.8. Statistics for Calls Service Responded to during each of the last three (3) Years.....	9
1.9. Service Area Information .....	10
1.9.1. County perspective .....	10
1.9.2. Geographic description.....	11
1.9.3. Population totals.....	11
1.9.4. Socioeconomic indicators .....	12
1.9.5. Health behaviors and outcomes .....	13
1.9.6. Fire Departments .....	14
1.9.7. Geographic factors and major roadways.....	14
1.9.8. Disadvantaged residents.....	15
1.10. Resources .....	17
1.10.1. Response Model.....	17
1.10.2. Staffing .....	17
1.10.3. Simultaneous Dispatch and Medical Control.....	17
1.10.4. Quality Improvement and Continuing Education .....	18
1.10.5. Statement of Financial Resources.....	18
2. Application for an Ambulance Service to Upgrade to an Advanced Life Support (ALS) Service.....	19
3. Advanced Life Support Services Agreement.....	20
4. Medical Director Participation Agreement.....	21
5. New York State Department of Health Ambulance Certification .....	22
6. Letters of Support .....	23
6.1. City of Beacon letter of support.....	23

6.2.	Town of Fishkill letter of Support.....	24
6.3.	Chelsea Fire District letter of Support.....	25
6.4.	Dutchess Junction Fire District letter of support .....	26
Table 1:	Fire services in BVAC's primary service area.....	7
Table 2:	Law enforcement agencies in BVAC's primary service area. ....	7
Table 3:	Advanced Life Support services available in BVAC's primary service area. ....	8
Table 4:	List of NYS DOH emergency room departments that BVAC primarily transports to. ....	9
Table 5:	Statistics for Calls Service Responded to during each of the last three (3) Years.....	9
Table 6:	List of ALS Providers from Dutchess County .....	10
Table 7:	EMS location codes for BVAC's primary service area.....	11
Table 8:	Socioeconomic indicator data for BVAC's service area.....	12
Table 9:	Subsidized Housing.....	15
Table 10:	Tax Credit and Inclusionary Apartments.....	16
Table 11:	Non-hospital treatment centers (i.e., Urgent Care).....	16
Table 12:	Long-Term Care (i.e., Nursing), and Rehabilitation Facilities.....	16
Figure 1:	Simultaneous Dispatch of ALS and BLS units for Priority 1 EMS calls.....	6
Figure 2:	Simultaneous Dispatch of ALS and BLS units for Priority 2 EMS calls.....	6
Figure 3:	Graph of population totals of Beacon and Fishkill from 1990 to 2021.....	12
Figure 4:	Illustration of the student body in the Beacon City School District by gender, ethnicity, and other groups.....	13
Figure 5:	Health behaviors and outcomes of Beacon and Fishkill from 2018 to 2021 .....	14

# 1. Emergency Medical Services System Analysis for Advanced Life Support Upgrades that contains all pertinent agency information

## 1.1. Background of the Applying Service

Beacon Volunteer Ambulance Corps (BVAC) began with the passion of Walter Detwiller. Walter Detwiller's son's life was saved by a New Jersey ambulance service. When Walter later moved to Beacon and became a Beacon police officer and member of the Beacon Engine Company, he realized that the community would benefit from having its own ambulance service. He enlisted the help of Joe Catalano, George Cable, the members of the Beacon Fire Engine Company, and 29 volunteers to launch the Beacon Volunteer Ambulance Corps in 1958.

The first BVAC ambulance was a donated 1948 burned out Cadillac. After being refurbished by the members, it was housed at the Beacon Fire Engine Company where emergency calls were received. The facilities were soon outgrown and the Beacon Fire Engine Company secured the donation of an old two bay garage for the BVAC. This, too, was soon outgrown so volunteers and the local Navy Reserve Seabee Unit started construction on the current building in 1975. The present day BVAC headquarters at 1 Arquilla Drive was dedicated in May of 1980.

Initially there was no county dispatch system so various members had phones installed in their homes to receive emergency calls. They would then call volunteers to staff the ambulances. In 1980 The Beacon Police Department began dispatching the BVAC via the members' new pagers. In 1984, BVAC joined the Dutchess County Bureau of Fire dispatch system, which is still used today.

BVAC services incorporation on April 16, 1959. The IRS issued BVAC a determination letter in September 1968, recognizing BVAC as tax-exempt under Internal Revenue Code (IRC) Section 501(c)(3). BVAC became New York State Certified in 1990 and became defibrillation certified in 1991.

BVAC also maintains strong community support through community education offerings which provides opportunities for learning and collaboration. BVAC collaborates with the Dutchess County Department of Behavioral & Community Health (DBCH) to offer free naloxone training and distribution. BVAC also fulfills requests for free Stop-the-Bleed training. More traditional community engagement is also much present at BVAC, such as school visits and First Aid/CPR classes. These efforts are additional examples of BVAC's commitment to our community.

Today, BVAC is still an independent organization following a hybrid staffing model of volunteers and employees. BVAC's current fleet includes: three modern NYS certified ambulances; a first response vehicle; a mass casualty incident trailer; and a utility trailer for rescues within the vast mountainous terrain of the district. BVAC strives to bring the best pre-hospital care to our residents and participates in all BLS adjuncts available from the Hudson Valley Regional EMS Council (HVREMSCo). Section 1.6 of this application lists all our BLS adjuncts. In 2022, BVAC had a call volume of 3182 calls.

The “New York State 2023 Evidence Based EMS Agenda for Future” written by a State EMS Sustainability Technical Advisory Group of the State Emergency Medical Services Council includes key recommendation 8: “Incentivize implementation of tiered EMS response systems, using Certified First Responders (CFRs), Basic Life Support (BLS) ambulances, Advanced Emergency Medical Technician (AEMT) staffing, and Paramedic staffed response units.”<sup>1</sup> BVAC is pursuing this upgrade as part of key recommendation 8.

## 1.2. How We Are Dispatched

In 1984, BVAC joined the Dutchess County Bureau of Fire dispatch system. The Dutchess County Department of Emergency Response oversees the County's 9-1-1 Emergency Communications Center, which provides centralized communications and coordination for EMS, fire, and police agencies throughout Dutchess County. This E-911 center is located at 392 Creek Road in Poughkeepsie, NY, and is currently managed by Commissioner Dana Smith<sup>2</sup>. Under Commissioner Smith are Timothy Darcy<sup>3</sup> as Director of the Dutchess County 911 Center and John Mahoney<sup>4</sup> as the Emergency Medical Services Coordinator. This 911 center uses a Geographic Information System (GIS) based Computer Aided Dispatch (CAD) system, and multiple telephone and emergency radio systems.

The E-911 center uses a system of tiered field deployment. Specifically for dispatches of Emergency Medical Services, the E-911 center uses four tiers:

- Priority 1 - Life Threatening – Simultaneous dispatch for FD response, BLS ambulance, and an ALS unit (all at Code 3 response<sup>5</sup>)
- Priority 2 - Unstable Patient - Simultaneous dispatch for BLS ambulance and an ALS unit (all at Code 3 response)
- Priority 3 - Emergency Stable Patient- Dispatch for a BLS ambulance (code 3 response)
- Priority 4 – Stable Patient - Dispatch for a BLS ambulance (code 1 response<sup>6</sup>)

As per the Dutchess County Department of Emergency Response Fire & EMS Response Plan in the Beacon Volunteer Ambulance Corps service area, a Priority 1 or Priority 2 EMS call activates a two-tiered EMS response with simultaneous dispatch of BLS and ALS providers. Figure 1 illustrates simultaneous dispatch of Priority 1 calls and Figure 2 illustrates simultaneous dispatch of Priority 2 calls. The full Fire & EMS Response Plan for assignments in the Beacon Volunteer Ambulance Corps service area can be viewed at:

[https://www.beaconvac.org/files/ugd/7cb5f1\\_e54a1a7571184f6999c69c7d322c3aff.pdf](https://www.beaconvac.org/files/ugd/7cb5f1_e54a1a7571184f6999c69c7d322c3aff.pdf).

---

<sup>1</sup> Source: [https://www.health.ny.gov/professionals/ems/docs/february\\_2023\\_sustainability\\_tag.pdf](https://www.health.ny.gov/professionals/ems/docs/february_2023_sustainability_tag.pdf)

<sup>2</sup> The Dutchess County Department of Emergency Response can be contacted through their main number at 845-486-2080.

<sup>3</sup> [tdarcy@dutchessny.gov](mailto:tdarcy@dutchessny.gov)

<sup>4</sup> [jmahoney@dutchessny.gov](mailto:jmahoney@dutchessny.gov)

<sup>5</sup> A Code 3 response is responding with lights and sirens.

<sup>6</sup> A Code 1 response is responding without lights and sirens.


	<b>Dutchess County Department of Emergency Response</b> FIRE & EMS Response Plan Assignment - w/ Address Exceptions As of 7/26/2023 9:26:24AM Server: NWPSDB\NWPSPROD			<b>Resource Legend</b> (U): Unit Type (#): Unit (E): Equipment (S): Skill (G): Response Group (C): Capability		
	<b>BVAC</b> <b>EMS P1</b> <b>Continuous</b>					
<b>Primary Resources</b>			<b>Backup Resources</b>			
<u>Alarm</u>	<u>Seq.</u>	<u>Action</u>	<u>Resource</u>	<u>Seq.</u>	<u>Action</u>	<u>Resource</u>
BVAC & BVCP EMS P1						
1	1	Dispatch	(U) BVAC Ambulance	1	Dispatch	(U) AZ-1 Ambulance
				2	Dispatch	(U) MLHQ Ambulance
				3	Dispatch	(U) Empress Ambulance
1	2	Dispatch	(U) AZ-1 Ambulance	1	Dispatch	(U) MLHQ Ambulance
				2	Dispatch	(U) Empress Ambulance

Figure 1: Simultaneous Dispatch of ALS and BLS units for Priority 1 EMS calls.


	<b>Dutchess County Department of Emergency Response</b> FIRE & EMS Response Plan Assignment - w/ Address Exceptions As of 7/26/2023 9:26:24AM Server: NWPSDB\NWPSPROD			<b>Resource Legend</b> (U): Unit Type (#): Unit (E): Equipment (S): Skill (G): Response Group (C): Capability		
	<b>BVAC</b> <b>EMS P2</b> <b>Continuous</b>					
<b>Primary Resources</b>			<b>Backup Resources</b>			
<u>Alarm</u>	<u>Seq.</u>	<u>Action</u>	<u>Resource</u>	<u>Seq.</u>	<u>Action</u>	<u>Resource</u>
BVAC & BVCP EMS P2						
1	1	Dispatch	(U) BVAC Ambulance	1	Dispatch	(U) AZ-1 Ambulance
				2	Dispatch	(U) MLHQ Ambulance
				3	Dispatch	(U) Empress Ambulance
1	2	Dispatch	(U) AZ-1 Ambulance	1	Dispatch	(U) MLHQ Ambulance
				2	Dispatch	(U) EMSTAR Ambulance

Figure 2: Simultaneous Dispatch of ALS and BLS units for Priority 2 EMS calls.

### 1.3. Basic Life Support First Response Services (i.e., Police, Fire Departments, and EMS)

The Beacon Volunteer Ambulance Corps operates through a Certificate of Need (CON) from New York State Department of Health (NYSDOH) in accordance with provisions of Article 30 of the Public Health Law in the primary territory of the City of Beacon and sections of the Town of Fishkill limited to Dutchess Junction, Glenham and Chelsea along Route 9D from 1-84 to Red School House Road (see BVAC’s NYS DOH Ambulance Certification in Section 5 of this application).

Table 1 list the five fire departments that serve the BVAC primary response area and their level of response.

Table 1: Fire services in BVAC's primary service area.

Service Name and address	EMS Service ID	Ownership	Level of Care	Level of Response	Phone
City of Beacon Fire Department 13 South Avenue, Beacon, NY 12508	0147	Municipality	EMT	Non-Transporting	845-831-1334
Chelsea Fire District 16 Liberty Street, Chelsea, NY 12512	0874	Fire District	EMT	Non-Transporting	845-831-4434
Dutchess Junction Fire District 75 Slocum Road, Beacon, NY 12508	n/a	Fire District	Automated External Defibrillator	n/a	845-831-2790
Glenham Fire District (Slater Chemical Fire Company)	0282	Fire District	EMT	Non-Transporting	845-831-2322
VA of Hudson Valley (Castle Point)	0457	US Government	EMT-P	VA Hospital only	845-838-5200

Table 2 list the four police departments that serve the BVAC primary response area and their level of care.

Table 2: Law enforcement agencies in BVAC's primary service area.

Service Name and address	Level of Care	Phone
<a href="#">Dutchess County Sheriff's Office</a> 108 Parker Ave Poughkeepsie, NY 12601	Narcan & Automated External Defibrillators	845-486-3800
<a href="#">New York State Police Troop K Headquarters</a> 2541 Route 44 Salt Point, NY 12578	Narcan & Automated External Defibrillators	845-677-7300
<a href="#">Beacon City Police Department</a> 1 Municipal Plaza Beacon, NY 12508	Narcan	845-831-4111
<a href="#">Fishkill Town Police Department</a> 807 Route 52 Fishkill, NY 12524	Narcan & Automated External Defibrillators	845-831-1110

1.4. Name of Mutual Aid Basic Life Support Ambulance Services: (i.e., any ambulance service that responds to the primary service area when unavailable)

Mutual aid BLS service are provided by the same commercial EMS agencies that provide ALS (see Section 1.5). BVAC is also a participating agency in Dutchess County Emergency

Response Mutual Aid Plan<sup>7</sup>. As stated in this plan: “Participating Agencies with the possibility for the need for mutual aid assistance in the time of fire or other emergency where the services of equipment and/or personnel would be required, the cities, villages, districts, fire companies, and fire departments have pledged their equipment and personnel agree, and recognize their contractual obligation to comply with this plan.” Due to BVAC’s proximity to Orange and Putnam Counties, local reciprocal assistance through the Dutchess County 9-1-1 Communications Center is in accordance with section 209 of the NYS General Municipal law even though there is no formal agreement between Dutchess County and the surrounding counties.

### 1.5. Name of Advanced Life Support Services: (i.e., EMT-I, EMT-CC, EMT-P)

Table 3 contains a list of the ALS services available in BVAC’s primary service area. The City of Beacon has contracted Ambulnz to dedicate one ALS unit within the City of Beacon. It is noted that at the time of this application, Mobile Life Support Service has been purchased by the parent company of Empress Ambulance Service and will be transitioning their services.

*Table 3: Advanced Life Support services available in BVAC's primary service area.*

Service Name	Service ID	Ownership	Level of Care
Ambulnz NY, LLC	0408	Commercial	EMT-P
Empress Ambulance Service, LLC	5930	Commercial	EMT-P

### 1.6. BLS Adjuncts

BVAC currently participates in the following HVREMSCo programs (also known as BLS Adjuncts):

- Glucometry
- Intranasal Naloxone (Narcan)
- Nebulized Albuterol
- Acquisition and transmission of 12 lead electrocardiograms (ECG)
- Continuous Positive Airway Pressure (CPAP) devices

BVAC also participates in the HVREMSCo i-Gel Airways pilot program for BLS providers. BVAC also implements the syringe epinephrine (Check & Inject NY) for Basic EMTs.

---

<sup>7</sup> See <https://www.dutchessny.gov/Departments/Emergency-Response/Docs/Mutual-Aid-Plan-for-Dutchess-County.pdf>



### 1.7. Name of Hospitals Patients are primarily Transported to:

While there are no hospitals with emergency departments within our primary service area, Table 4 lists the three regional hospitals that we frequently transport our patients to.

Table 4: List of NYS DOH emergency room departments that BVAC primarily transports to.

County	EMS Disposition Code	DOH Permanent Facility Identifier (PFI)	Facility Name	Designations
Orange	357	0694	St. Luke's Cornwall Hospital – Newburgh (part of the Montefiore Health System)	<ul style="list-style-type: none"> <li>• Level 2 Perinatal Center</li> <li>• Level 3 Adult Trauma Center</li> <li>• Primary Stroke Center</li> <li>• SAFE Designated Hospital</li> </ul>
Dutchess	136	0180	MidHudson Regional Hospital (part of the Westchester Medical Center Health network)	<ul style="list-style-type: none"> <li>• Level 2 Adult Trauma Center</li> <li>• Thrombectomy Capable Stroke Center</li> <li>• SAFE Designated Hospital</li> </ul>
Dutchess	134	0181	Vassar Brothers Medical Center (part of the Nuvance Health network)	<ul style="list-style-type: none"> <li>• Level 3 Perinatal Center</li> <li>• Level 2 Adult Trauma Center</li> <li>• Primary Stroke Center</li> </ul>

### 1.8. Statistics for Calls Service Responded to during each of the last three (3) Years

Generally, our call volume is increasing, which also increases the amount of our transports. Of note, our mutual aid responses out of our primary service area are also slowly increasing. Table 5 tabulates the statistics for calls over the last three years.

Table 5: Statistics for Calls Service Responded to during each of the last three (3) Years

	2020	2021	2022
Total Call Volume (including BLS, ALS, Transport, Non-Transport, Stand by):	2,688	2,969	3,182
Number of Calls in which your Service Responded out of Primary Service Area for Mutual Aid Requests:	11	23	37
Number of Calls within the Primary Service Area that were handled by a Mutual Aid Service:	568	685	372
Number of Calls that resulted in Basic Life Support Transports to a Hospital:	1,112	1,244	1,315
Number of Calls that resulted in Advanced Life Support Transports to a Hospital:	576	560	792

Number of Calls that Advanced Life Support was also Dispatched (Include ALS Requests and Simultaneous Dispatch):	1,587	1,817	1,931
Number of Calls that Advanced Life Support was cancelled:	407	453	362
Number of Calls that Advanced Life Support was unavailable:	286	499	391
Number of Calls in which your Service arrived at the Scene of the Call in less than eight (8) minutes from time of Initial dispatch:	1,250	1,277	1,626
Number of Calls in which your Service arrived at the Scene of the Call in greater than twelve (12) minutes from time of Initial dispatch:	215	246	141
Number of Calls in which your Service Responded in less than five (5) minutes from the Time of Initial Dispatch:	1,694	1,808	2,110

## 1.9. Service Area Information

### 1.9.1. County perspective

BVAC is located in the southwest part of Dutchess County in the State of New York. BVAC is an active member of the Dutchess County EMS Council and is served by HVREMSCo. Out of the six counties served by the HVREMSCo, only Orange County has one AEMT agency (Port Jervis EMS)<sup>8</sup>. NYS DOH only lists 20 BLS (EMT) Services and 6 ALS (EMT-P) Services from Dutchess County (see Table 6 for a list of ALS agencies from Dutchess County). Due to geographic limitations, not all of these services can provide ALS to BVAC's primary response area. The two ALS services that respond to Beacon are added to the bottom of Table 6 where one has a satellite office in Newburgh and the other in Poughkeepsie.

Table 6: List of ALS Providers from Dutchess County

Service Name	Service Address	Service Type	Service ID	Responds to Beacon
Alamo Ambulance Service, Inc.	1351 Route 55 Suite 200 LaGrangeville, NY 12540	Ambulance	1311	No
Arlington Fire District	11 Burnett Boulevard Poughkeepsie, NY 12603	Ambulance	1313	No
Arlington Fire District	11 Burnett Boulevard Poughkeepsie, NY 12603	First Responder	6263	No
La Grange Fire District EMS	504 Freedom Plains Road Poughkeepsie, NY 12603	Ambulance	1319	No
Northern Dutchess Paramedics, Inc.	PO Box 672 Rhinebeck, NY 12572	Ambulance	0289	No
VA of Hudson Valley	41 Castle Point Road Bldg 8 Wappingers Falls, NY 12590	Ambulance	0457	No
Ambulnz NY, LLC	(Hudson Valley office) 263 NY-17K, Newburgh, NY 12550	Ambulance	0408	Yes
Empress Ambulance Service, LLC	(North office) 10 S White St, Poughkeepsie, NY 12601	Ambulance	5930	Yes

<sup>8</sup> Source: [https://www.health.ny.gov/professionals/ems/pdf/agency\\_list\\_aalffrs.pdf](https://www.health.ny.gov/professionals/ems/pdf/agency_list_aalffrs.pdf)

### 1.9.2. Geographic description

BVAC is certified as a New York State ambulance service in accordance with the provisions of Article 30 of the Public Health Law with the primary territory of the City of Beacon and sections of the Town of Fishkill limited to Dutchess Junction, Glenham and Chelsea along Route 9D from 1-84 to Red School House Road (about 20.34 square miles). BVAC's primary service area include two EMS Location of 1301 and 1355 (see Table 7).

Table 7: EMS location codes for BVAC's primary service area.

EMS Location Code <sup>9</sup>	Location Name (Place)	County	FIPS Place Code	FIPS County Code	Zip Code
1301	Beacon (City/Village of)	Dutchess	05100	36027	12508
1355	Fishkill (Town of)	Dutchess	25978	36027	12524

### 1.9.3. Population totals

BVAC's primary service area population is about 25,069 (see Section 1.9.4 for further description of the population demographics). Since BVAC's primary service area includes only part of the Town of Fishkill with all of the City of Beacon, multi-year populations estimates are not readily available that would be specific to BVAC's primary service area. At best, Census data for both the Town of Fishkill and the City of Beacon from 2010 to 2021 project that the population totals are somewhat leveled (see Figure 3). However, BVAC's primary service area is expected to experience an increase in both residents and tourist. These expected increases will also directly impact the population density which can lead to traffic delays. The following project are at various stages of development<sup>10, 11</sup>:

- 12 Highland Place – 5 houses
- 16 W Main St – 62 units
- 2 Cross St – 18 units
- Tioronda Estate – 75-room inn and spa with a 110-seat restaurant
- 113 Wolcott Ave – 198-person event space
- The Lofts at Beacon – 28 lofts plus artists' studios
- 364 Main St – 20 unit plus 7,500 square feet of commercial space
- River Ridge – 18 townhouses
- 23-28 Creek Drive – 8 units plus 20,000 square feet of commercial space
- 248 Tioronda Ave – 64 units plus 25,400 square feet of commercial space
- 416-420 Main St – three floors of commercial space and one apartment

<sup>9</sup> Source: <https://www.health.ny.gov/professionals/ems/counties/counties.htm?county=dutchess>

<sup>10</sup> Source: <https://highlandscurrent.org/2022/09/16/booming-beacon-5/>

<sup>11</sup> Source: <https://highlandscurrent.org/2021/08/13/beacon-development/>

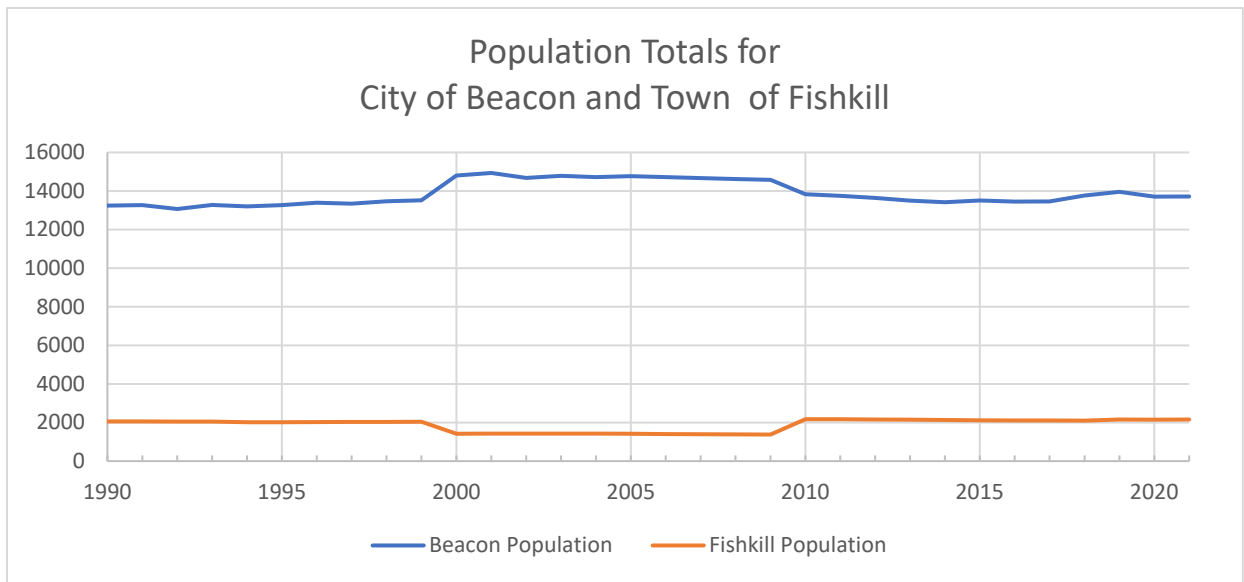


Figure 3: Graph of population totals of Beacon and Fishkill from 1990 to 2021 (Source: Data from www2.census.gov; processed by datacommons.org, an initiative from Google).

#### 1.9.4. Socioeconomic indicators

Table 8 describes the various socioeconomic indicators in BVAC’s service area as well as the State and country averages for comparison (full report can be found in at the link in footnote below<sup>12</sup>).

Table 8: Socioeconomic indicator data for BVAC's service area.

Socioeconomic Indicator	Value	State Average	Percentile in State	USA Average	Percentile in USA
People of Color	42%	42%	57	39%	60
Low Income	20%	28%	43	31%	37
Unemployment Rate	5%	6%	58	6%	61
Limited English Speaking Households	2%	7%	52	5%	63
Less Than High School Education	14%	12%	66	12%	69
Under Age 5	4%	5%	48	6%	45
Over Age 64	16%	17%	50	17%	51
Low Life Expectancy	17%	17%	45	20%	24

Source: EPA’s EJScreen using BVAC’s primary service area

<sup>12</sup> The full EJScreen Community report of socioeconomic indicator data using BVAC’s primary service area is available at: [https://www.beaconvac.org/files/ugd/7cb5f1\\_e6c1c206fcba40e8844cda2b466015f1.pdf](https://www.beaconvac.org/files/ugd/7cb5f1_e6c1c206fcba40e8844cda2b466015f1.pdf)

BVAC’s service area also includes all six schools of the Beacon City School District which include grade levels from K through 12. Total enrollment in the last school year (2021-2022) was 2,515. Figure 4 illustrates the demographics of this student body by gender, ethnicity, and other groups<sup>13</sup>.

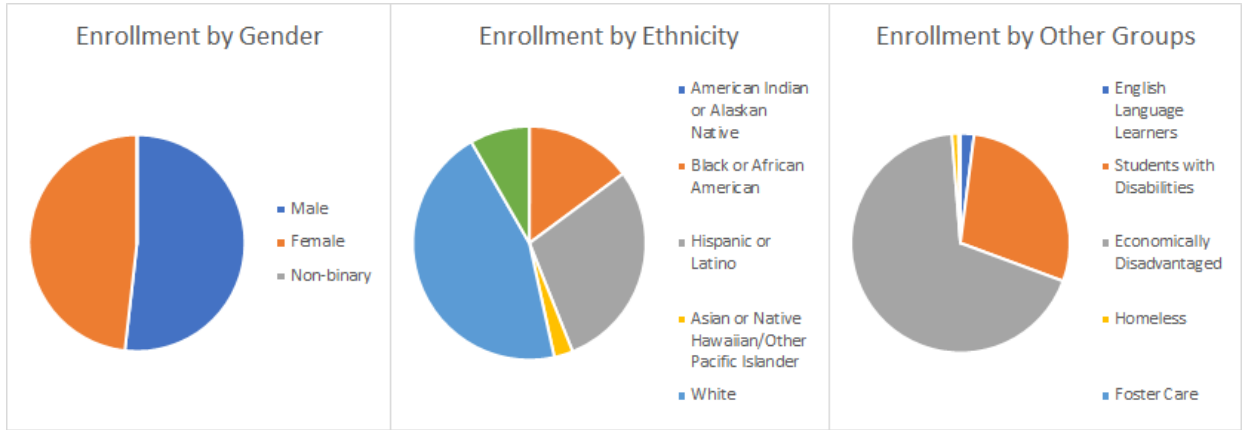


Figure 4: Illustration of the student body in the Beacon City School District by gender, ethnicity, and other groups (Source: NYSED).

#### 1.9.5. Health behaviors and outcomes

From 2020 to 2021, data from the CDC shows an increase of behavior risk factors such as obesity, physical inactivity, and smoking. For the same time period, “not good” general mental health and physical health is being observed to also increase. Figure 5 illustrates the larger trend from 2017/2018.

<sup>13</sup> The full report of the Beacon City School District’s enrollment by various demographic groups is available at <https://data.nysed.gov/enrollment.php?year=2022&instid=800000053483>.

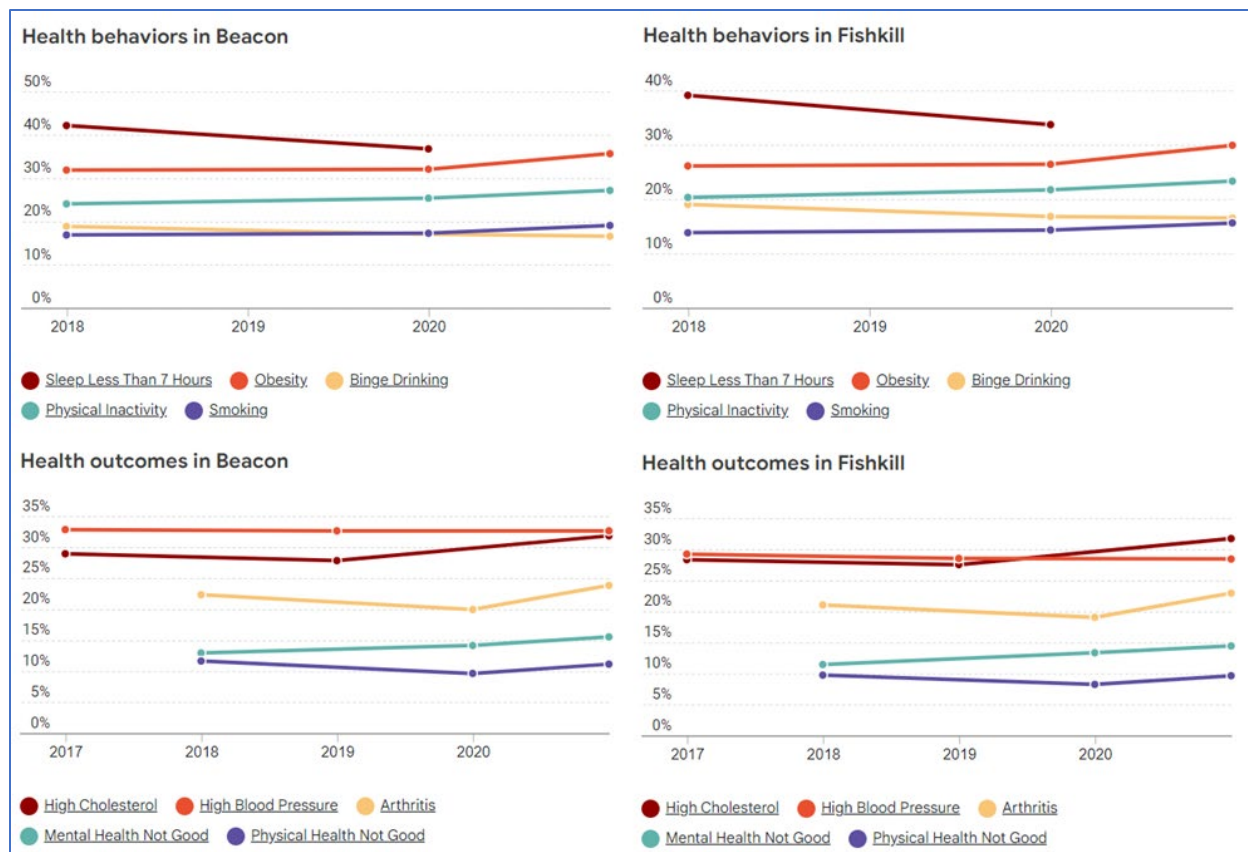


Figure 5: Health behaviors and outcomes of Beacon and Fishkill from 2018 to 2021 (Source: Data from cdc.gov, Measurement method: AgeAdjustedPrevalence; processed by datacommons.org, an initiative from Google).

### 1.9.6. Fire Departments

As described in Section 1.3, BVAC’s primary service area includes the following five fire departments: City of Beacon; Castle Point; Chelsea; Dutchess Junction; and Slater (Glenham).

### 1.9.7. Geographic factors and major roadways

BVAC’s primary service area also includes the following significant geographic challenges:

- Mount Beacon
- Hudson River
- MetroNorth Hudson Line
- Newburgh-Beacon Bridge
- Interstate 84
- US 9
- New York 9D
- New York 52

The first two geographic challenges offer access issues which leads to delays in accessing the patient. BVAC operates an all-terrain Utility Task Vehicle (UTV) to traverse some of the trails of Mount Beacon, but some of the areas are only accessible on foot. With regards to the Hudson River, resources outside the agency typically bring a patient to shore where BVAC will render care, but these resources are outside of Beacon and Fishkill. Beacon also has a port for a ferry that crosses the Hudson River from Newburgh and a dock managed by Clarkson University as part of their Beacon Institute for Rivers and Estuaries program. Clarkson University's dock is also used for boat tours of Bannerman Island by Bannerman Castle Trust and free sails aboard the Woody Guthrie by the Beacon Sloop Club. The Beacon waterfront also includes a kayak and paddleboard launch area managed by Scenic Hudson and a floating wading pool managed by River Pool at Beacon.

MetroNorth operates a commuter rail described as the Hudson Line through BVAC's service area with a train stop in Beacon. This same rail is also used by Amtrak but does not include a stop in Beacon as part of their service. On the overnight when the rail is not being used for commuter trains, the rail is also used to transport cargo. Access to patients on the rail mostly happens at the Beacon Station when the train comes into the station in typically the following scenarios:

- The conductor has reported a medical emergency. Depending on the emergency, the patient may still be on the train or has been deboarded onto the station platform.
- The patient self-deboards and contacts 911.

Medical emergencies that include the rail when the train is not at the station include patients struck by a train or the emergency brake on the train was pulled when the train was not at the Beacon Station. Access to the rail outside of the Beacon Station is limited to MetroNorth-restricted access points.

The Newburgh-Beacon Bridge and Interstate 84 are heavily used by both commercial and non-commercial traffic. BVAC's primary service area also includes major roadways such as US 9, New York 9D, and New York 52. These roadways are main thoroughfares for Beacon and Fishkill for residents, tourism, and local commerce. Once a factory town, Beacon still has some industrial facilities such as Chemprene (rubber textiles) and Hudson Baylar (recycling).

#### 1.9.8. Disadvantaged residents

BVAC's primary service area also include various disadvantage communities such as low-income, senior, and disabled residents. Table 9 provides a list of subsidized housing. Table 10 provides a list of tax credit and inclusionary apartments. Table 11 provides a list of non-hospital treatment centers (i.e., Urgent Care). Table 12 provides a list of long-term care and rehabilitation treatment centers.

*Table 9: Subsidized Housing*

Complex Name	Beds/Units	Municipality	Phone
Davies South Terrace	124 Units (low-income)	Beacon	914-592-5434
Forrestal Heights	175 Units (seniors and low-income)	Beacon	845-831-1289
Hamilton Fish Plaza	70 Units (seniors)	Beacon	845-831-1289

Tompkins Terrace	193 Units (low-income)	Beacon	845-831-6700
------------------	------------------------	--------	--------------

Table 10: Tax Credit and Inclusionary Apartments

Complex Name	Beds/Units	Municipality	Phone
Horizons at Fishkill Apartments 14 Dogwood Lane Beacon, NY 12508	90 Units (Seniors or eligible people with disabilities only)	Fishkill	845-440-7678
Highland Meadows Senior	53 Units – 1 bedroom; 15 Units – 2 bedroom. (Seniors only)	Beacon	845-297-2004
Meadow Ridge 1	20 Units – 2 bedroom 34 Units – 3 bedroom (Low income)	Beacon	845-297-2004
Meadow Ridge II	20 Units – 1 bedroom 32 Units – 2 bedroom	Beacon	845-297-2004
Views at Rocky Glenn	32 Units – 1 bedroom 38 Units – 2 bedroom 12 Units – 3 bedroom	Fishkill	845-831-8844

Table 11: Non-hospital treatment centers (i.e., Urgent Care)

Type	Name	Address	Phone
Medical	Sun River Health	6 Henry St, Beacon, NY	845-831-0400
Mental Health	Mental Health America of Dutchess County	451 Fishkill Ave, Beacon, NY	845-473-2500
Mental Health	Dutchess County Department of Behavioral & Community Health	223 Main Street, Beacon, NY	845-486-2700

Table 12: Long-Term Care (i.e., Nursing), and Rehabilitation Facilities

Name	Address	Phone	Type	Beds/Units
<a href="#">Fishkill Center for Rehabilitation and Nursing</a> (formerly Elant at Fishkill)	22 Robert R. Kasin Way, Beacon, NY 12508-1199	800-501-3936	Nursing Home	160 beds for Residential Health Care
<a href="#">Taconic Rehabilitation and Nursing at Beacon</a> (formerly Wingate at Beacon)	10 Hastings Dr., Beacon, NY 12508	845-440-1600	Nursing Home	140 beds for Residential Health Care; 20 beds for Ventilator Dependent
<a href="#">Hedgewood Assisted Living, LLC</a>	355 Fishkill Ave., Beacon, NY 12508	845-831-6000	Adult Home	192 beds for Assisted Living Program (ALP)



<a href="#">Inspire at McClelland</a> (formerly McClelland's Home for Adults)	126 Old Castle Point Rd, Beacon, NY 12508	845-831-1909	Adult Home	6 beds for Daycare; 5 beds for Respite; 75 beds for Overall Capacity
Ability Beyond Disability	110 Howland Ave, Beacon, NY 12508	866-997-5781	OPWDD housing	14 beds (long-term care)
Gateway Hudson Valley	1 Wodenethe Dr, Beacon, NY 12508	845-331-1261	OPWDD housing	12 beds (2-year transitional)
VA of Hudson Valley	41 Castle Point Rd, Building 15H-1, Wappingers Falls, NY 12590	845-831-2000 x215590	VA Long-term care	27 beds for long-term care
The Watchtower	800-1000 Sacandaga Loop, Wappingers Falls, NY 12590	845-524-3140	Faith-based congregate living	28 units for independent seniors; 70 units for dependent seniors
St Lawrence Friary	180 Sargent Ave, Beacon, NY 12508	845-838-0759	Faith-based congregate living	24 beds (most are dependent seniors)

## 1.10. Resources

### 1.10.1. Response Model

As mentioned in Section 1.1, BVAC's current fleet includes three modern NYS certified ambulances and a first response vehicle. BVAC will use the first response vehicle for the AEMT with the current two-person ambulance schedule and, if warranted, have the AEMT continue care on the ambulance while one person returns the first response vehicle to the station to prepare the next ambulance for the next call.

### 1.10.2. Staffing

Utilizing paid and volunteer personnel, AEMT service will, if granted, be available daily, twenty-four hours a day, seven days a week and 365 days of the year. In addition to this service, BVAC will continue to be part of the Dutchess County Emergency Response Mutual Aid Plan. In accordance with REMSCO policies, lapse in providing AEMT coverage by BVAC will be documented and reported immediately upon occurrence.

### 1.10.3. Simultaneous Dispatch and Medical Control

BVAC will adhere to the Two-tiered priority response system with simultaneous dispatch and utilize current HVREMAC and New York State Department of Health approved triage, treatment and transportation protocols, procedures and standards of care. Currently, the City of Beacon directly contracts for ALS service with Ambulnz, LLC. The Town of Fishkill has a contract for

ALS service with Mobile Life Support Service which is currently being honored by Empress Ambulance Service while a new contract is established.

Further BVAC will actively coordinate direct medical control with an authorized HVREMAC Hospital, specifically Vassar Brothers Medical Center, St. Lukes/Cornwall Hospital, and/or MidHudson Regional Hospital. We will continue to utilize our current medical director, Dr. Isaac Bruck who will oversee medical service operations and adherence to established HVREMAC protocols as it relates to standards of care.

#### 1.10.4. Quality Improvement and Continuing Education

BVAC currently participates in and will further develop its BLS Quality Improvement (QI) and Continuing Medical Education (CME) program to include AEMT Quality Improvement and AEMT Continuing Medical Education (CME) programs. BVAC will coordinate these programs utilizing HVREMSCO Standards and maintain all necessary and appropriate State and Regional certification requirements for all of its personnel, services and equipment.

#### 1.10.5. Statement of Financial Resources

BVAC is a financially strong organization and has maintained their 501(c)(3) status since 1968. As a 501(c)(3) organization, BVAC can be found through IRS' [Tax Exempt Organization Search](#) tool from which one can also find copies of our returns (Form 990) of previous years. BVAC has a financial corporate reserve available to startup an AEMT program, such as equipment and supplies. BVAC does not anticipate the need to purchase additional vehicles to start an AEMT program at this time.

BVAC's primary source of income is revenue recovery. The large volume of calls handled by BVAC allows us to generate enough revenue to cover our costs, including payroll and consumables. This model will be extended to fund the cost of an AEMT program to be staffed by employees and volunteers.

BVAC has successfully used third-party billing for more than two decades. BVAC currently provides single-billing to patients at both BLS and ALS levels. We are able to use single-billing for ALS patients by using contractual agreements with commercial ALS providers when transporting on our ambulance. BVAC pays the ALS provider a fee for the ALS portion of the service, regardless of whether the bill is paid for by the patient or insurance. BVAC anticipates the AEMT program will be consistent with cost and revenue streams when completing the service upgrade.

2. Application for an Ambulance Service to Upgrade to an Advanced Life Support (ALS) Service

Application must include a written explanation indicating how the service will satisfy all of the requirements of Points A-H as outlined in Section 6 of the HVREMAC Medical Control Plan (Attached) and must be submitted to the HVREMSCO Office.

Name of Ambulance Service: Beacon Volunteer Ambulance Corps  
Name of Chief Operations Officer(s): Nicholas Scarchilli  
Telephone Number: (845) 831-4540  
FAX Number: (845) 831-0191  
Address of Service: 1 Arquilla Dr  
PO Box 54  
Beacon, NY 12508  
Proposed Area of Operation: The City of Beacon and sections of the Town of Fishkill limited to Dutchess Junction, Glenham and Chelsea along Route 9D from 1-84 to Red School House Road  
Projected Date of ALS Operation: January 7, 2024  
Proposed Level of ALS Service: AEMT

The undersigned acknowledges that he/she has received and read the HVREMAC Medical Control Plan and certifies to the accuracy of the information contained on this agreement and within the attachments.

Service's Executive Officer: Name: Dr. Paul Ostrovsky  
Signature: Paul Ostrovsky MD PRES Date: 10/17/23

Chief Operations Officer: Name: Nicholas Scarchilli  
Signature: [Signature] Date: 10/17/2023

Medical Director: Name: Dr. Isaac Bruck  
Signature: Dr. Isaac D. Bruck Date: 10/20/2023

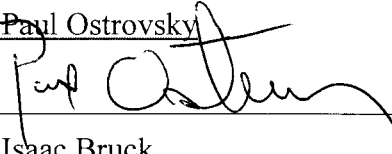
### 3. Advanced Life Support Services Agreement

This Agreement, dated \_\_\_\_\_ by and between The Hudson Valley Regional Emergency Medical Services Council, INC. (Hereinafter the HVREMSCO) and the Beacon Volunteer Ambulance Corps (Herein after the Agency). Whereas, the Agency desires to participate in and associate with the HVREMSCO as an Advanced Life Support Service and the HVREMSCO desires participation and association with said Agency, it is hereby agreed, in consideration for participation and association with said system as follows: Said Agency shall, as an Advanced Life Support Service, associated and participating in and/or with the HVREMSCO agrees to the following:

1. To maintain a valid New York State Department of Health Ambulance Certification;
2. To maintain an approved New York State EMS Code Part 80 Plan (EMT-CC and EMT-P Services Only);
3. To meet all requirements of the New York State EMS Code Part - 800.5;
4. To offer ALS service seven days a week, twenty four hours a day appropriate to the highest level of ALS service authorized to provide;
5. To utilize an AEMT-P (Paramedic) two-tiered priority response system with a simultaneous dispatch system if authorized to provide a level of pre-hospital emergency medical care classification below an AEMT-P (Paramedic) as indicated on page 5, section 6 of the HVREMSCO Medical Control Plan;
6. To utilize and adhere to current HVREMAC and New York State Department of Health approved triage, treatment, and transportation protocols, procedures, and standards of care;
7. To coordinate direct medical control with an authorized Hudson Valley Regional Medical Control Hospital;
8. To identify an authorized HVREMAC approved Medical Director to oversee service operations;
9. To participate in the HVREMSCO Quality Improvement Program and Continuing Medical Education Program;
10. To maintain appropriate and current State and Regional certification and requirements for all personnel, services, and equipment;
11. Understand that an individual or agency's privilege to provide Advanced Life Support Services may be revoked or suspended at any time by the HVREMAC;
12. To immediately notify the HVREMAC in writing and request a temporary re-classification of ALS services, if at any time the ALS service cannot meet any of the above listed requirements.

Service's Executive  
Officer:

Name: Dr. Paul Ostrovsky

Signature:  MD

Date: 10/17/23

Medical Director:

Name: Dr. Isaac Bruck

Signature: 

Date: 10/20/2023

HVREMSCO  
Medical Director:

Name: Dr. Mark Papish

Signature: \_\_\_\_\_

Date: \_\_\_\_\_

## 4. Medical Director Participation Agreement

As a Physician licensed by New York State, I, Dr. Isaac Bruck, agree to serve as the Medical Director in charge of the oversight and Coordination of all pre-hospital medical care provided by the New York State certified and Hudson Valley Regional Medical Advisory Committee (HVREMAC) credentialed Emergency Services personnel who are affiliated with the Beacon Volunteer Ambulance Corps.

I assure that the above listed agency's provision of pre-hospital care will conform to New York State and HVREMAC approved triage, treatment, and transportation protocols. I will not be responsible for actions that may result in death or injury from gross negligence or deviation from current accepted protocols or standards by the provider.

I acknowledge my familiarity with New York State and HVREMAC approved triage, treatment and transportation protocols, medical control plan, training procedures and quality improvement policies and procedures and will expect the above agency's personnel to adhere to these guidelines for pre-hospital emergency care as required by the HVREMAC.

In conjunction with the HVREMAC, I will serve as the medical resource for continuing medical education (CME) and quality control of all pre-hospital emergency medical care. If I am unable to continue to serve as the Medical Director for the above listed agency, I will notify the HVREMAC in writing within 30 days.

***I have read the above information and will follow these guidelines as written.***

Medical Director:      Name:      Dr. Isaac Bruck  
Signature: *Dr. Isaac S. Bruck*      Date: 10/20/2023  
Address:      MidHudson Regional Hospital  
                  of Westchester Medical Center  
                  241 North Rd  
                  Poughkeepsie, NY 12601  
Telephone:      845-431-8220  
Email:      [Isaac.Bruck@wmchealth.org](mailto:Isaac.Bruck@wmchealth.org)

## 5. New York State Department of Health Ambulance Certification

MAR

Agency Code Number: 1314      Issued: 4/17/2023      Expires: 4/30/2025

NEW YORK STATE DEPARTMENT OF HEALTH  
**Ambulance Service Certificate**

Beacon Volunteer Ambulance Corps, Inc.

 *is hereby certified as a New York State ambulance service in accordance with the provisions of Article 30 of the Public Health Law* 

**PRIMARY TERRITORY:**  
The City of Beacon and sections of the Town of Fishkill limited to Dutchess Junction, Glenham and Chelsea along Route 9D from I-84 to Red School House Road.

  
Emergency Medical Services Program

  
Commissioner of Health

This certificate may be revoked, suspended, limited or annulled for violation of the Public Health Law

**THIS CERTIFICATE IS NOT TRANSFERABLE**  
Keep conspicuously posted

DOH-3414 (8/91)      No. 37827

## 6. Letters of Support

### 6.1. City of Beacon letter of support



Christopher White  
City Administrator

## CITY OF BEACON New York

OFFICE OF CITY ADMINISTRATOR

845-838-5000

March 27, 2023

William Hughes, Executive Director  
Hudson Valley Regional EMS Council  
33 Airport Center Dr, Suite 204  
New Windsor, NY 12553

Dear Mr. Hughes:

I am pleased to provide this letter of support for the application submitted by the Beacon Volunteer Ambulance Corps, Inc. (BVAC) to provide Advanced Emergency Medical Technician (AEMT) service to the City of Beacon. BVAC has been an integral part of the pre-hospital care and transport of the citizens of Beacon for over 60 years, and the City strongly supports BVAC's efforts to expand to include AEMT services.

The City commends BVAC for looking to increase the number of advanced EMT providers in its service area. This will not only improve the quality of patient care but also provides an avenue for professional development to BVAC volunteers and staff. This initiative- in combination with better remuneration- will hopefully contribute to provider retention in EMS to address the ongoing shortage of qualified staff in this field.

The City of Beacon recognizes that BVAC's application to provide the service level of AEMT is a clear sign that it is strategically planning to address industry-wide challenges and remain a highly valuable asset to our community for many years to come.

Thank you for your consideration of BVAC's application. If you need any additional information, please don't hesitate to contact me at (845) 838-5009 or [cwhite@beaconny.gov](mailto:cwhite@beaconny.gov).

Sincerely,

Christopher White  
City Administrator

## 6.2. Town of Fishkill letter of Support



### Town of Fishkill Office of the Town Supervisor

---

William Hughes, Executive Director  
Hudson Valley Regional EMS Council  
33 Airport Center Dr, Suite 204  
New Windsor, NY 12553

Dear Mr. Hughes:

The Town of Fishkill is pleased to support the application of Beacon Volunteer Ambulance to become an AEMT agency.

BVAC has been providing uninterrupted ambulance service to the citizens of four fire districts in Fishkill for over six decades. These are Castle Point, Chelsea, Glenham and Dutchess Junction.

I am well aware of the shortage of Advanced Life Support in Dutchess County and that is certainly the reality in the Town of Fishkill. It is greatly appreciated that BVAC will be able to provide a higher level of care to the citizens of Fishkill in its service area.

If you have any questions, please feel free to contact me.

Sincerely,

Ozzy Albra  
Fishkill Town Supervisor

---

Ozzy Albra, Town Supervisor  
(845) 831-7800 ext. 3309  
(845) 831-6040 Fax  
supervisor@fishkill-ny.gov

Fishkill Town Hall  
807 Route 52  
Fishkill, NY, 12524  
www.fishkill-ny.gov



### 6.3. Chelsea Fire District letter of Support

CHELSEA FIRE DISTRICT  
P.O. Box 128, Chelsea, NY 12512

chelseafiredist@optonline.net  
TEL 845-831-6244 FAX 845-765-2429

William Hughes, Executive Director  
Hudson Valley Regional EMS Council  
33 Airport Center Dr, Suite 204  
New Windsor, NY 12553

Dear Mr. Hughes:

The Chelsea Fire District in the Town of Fishkill is pleased to support the application of Beacon Volunteer Ambulance to become an AEMT agency.

BVAC has been providing uninterrupted ambulance service to the citizens of our fire districts for over six decades. The Chelsea Fire District and BVAC have a long-standing working relationship. Working side by side together through many triumphs and tragedies, we see the need for a higher level of care that should and can be provided by BVAC,

I am well aware of the shortage of Advanced Life Support in Dutchess County and that is certainly the reality in the Chelsea Fire District. It is greatly appreciated that BVAC will be able to provide a higher level of care to the citizens in our service area.

Thank you for taking the time to read this letter and consideration of the request for upgrade into consideration.

If you have any questions, please feel free to contact me.

Sincerely,



Ryan McCluskey  
Fire Chief  
Chelsea Fire District  
[ChelseaChief35@icloud.com](mailto:ChelseaChief35@icloud.com)  
845-242-6411

## 6.4. Dutchess Junction Fire District letter of support

### DUTCHESS JUNCTION FIRE COMPANY

---

75 SLOCUM ROAD • ~~BEACON~~ • BEACON, NY 12508 • EMERGENCY 911 • (845) 831-2790 SOCIAL CALLS  
ORGANIZED JULY 1972

Hudson Valley Regional EMS Council  
33 Airport Center Dr, Suite 204  
New Windsor, NY 12553

October 10, 2023

Dear Hudson Valley Regional Emergency Medical Advisory Committee (HVREMAC):

On behalf of the Dutchess Junction Fire District and the residents it protects, we are pleased to support the application of the Beacon Volunteer Ambulance (BVAC) to upgrade their level of care to include Advanced Emergency Medical Technicians (AEMT).

BVAC has been reliably providing ambulance service to our residents for many decades. We hope BVAC's application to upgrade to AEMT will be well received by the HVREMAC in order to ensure high-quality prehospital emergency medical care for our residents.

If you have any questions, please feel free to contact us.

Sincerely,



Fred Finck  
Chairman, Board of Commissioners